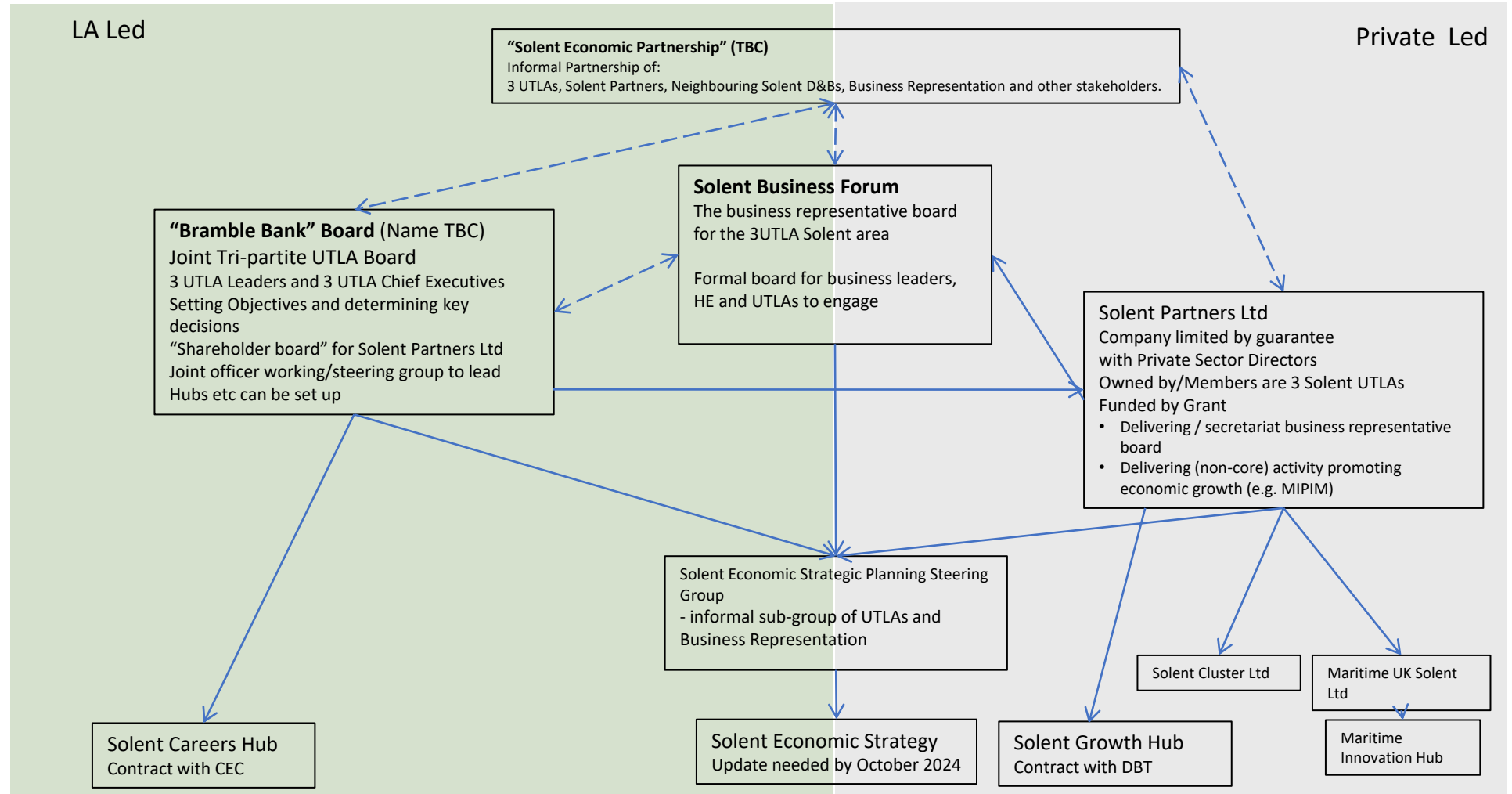


Preferred structure that needs to be considered the Public Procurement Regulations (PPRs), in terms of the commissioning and external delivery through partners. Key assumptions - PPRs will determine what functions the 3 UTLAs may need to 'directly' deliver and those elements that might be delivered by delivery partners such as Solent Partners.



Further work is needed to determine the final governance and delivery structure.